



Report type: **PNR Analysis**

Customer: [REDACTED]

Period Start: 01-01-2008

Period End: 30-09-2008

Report Date: 04-12-2008

Report Reference: [REDACTED]

**Disclaimer**

*This report provides detailed performance indicators that include the number of on-time flights, delayed flights and cancelled flights. Customer acknowledges that all data provided or available through Lennoc is owned either by Lennoc BV or by third-party data providers, and that Customer shall not acquire any ownership or interest whatsoever in such data. Lennoc data is solely for the benefit and purposes of Customer, and Customer is prohibited from publishing or selling, sublicensing, or otherwise transferring any part of the data to third parties, without written permission from Lennoc BV.*

*The information contained in Lennoc's reports has been compiled from many sources, and Lennoc and its suppliers disclaim all responsibility for checking and verifying that the underlying data is 100% accurate. Consequently, the data is provided "as is" and Lennoc provides no warranties of any type to Customer. Lennoc and its data providers are not liable for any consequential damages or financial loss caused by any person's reliance on the data.*

**CUSTOMER DATA**

---

Number of segments: 11.328  
 Number of routes: 1.738  
 First flight date: 02-jan-2008  
 Last flight date: 30-sep-2008

**MATCH**

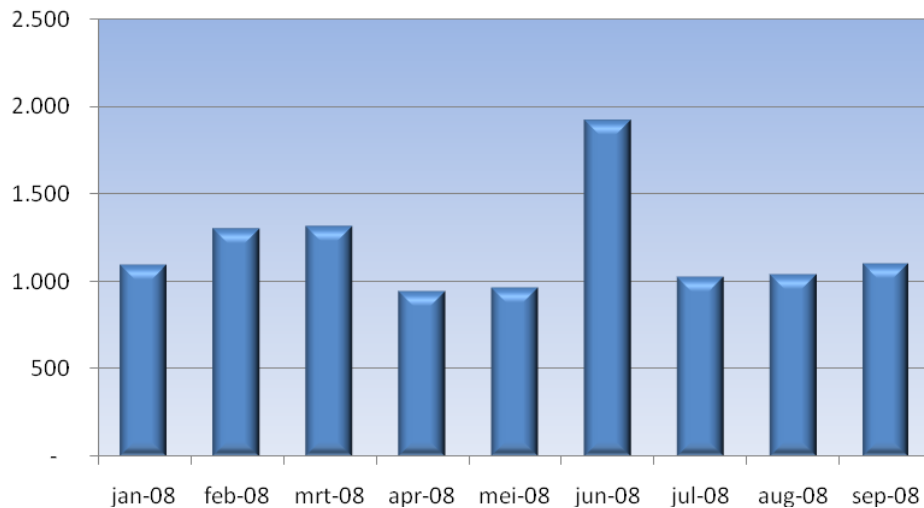
---

Number of segments: 10.716 (94.6%)  
 Number of routes: 1.551 (89.2%)  
 First flight date: 02-jan-2008  
 Last flight date: 30-sep-2008

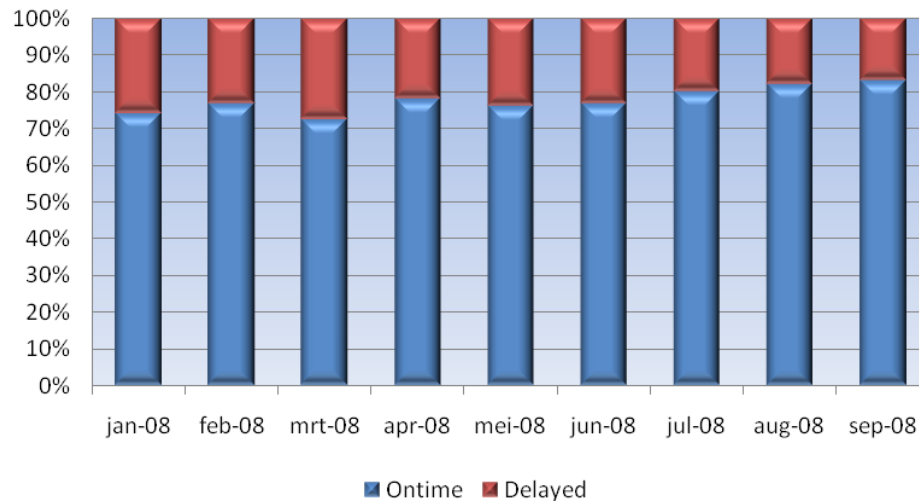
**MONTH STATISTICS**

---

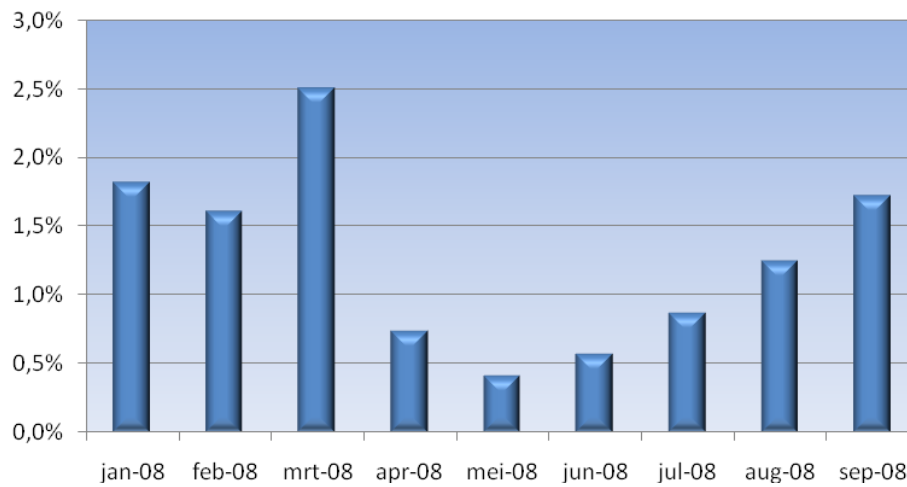
**Number of flights**



### On-time performance

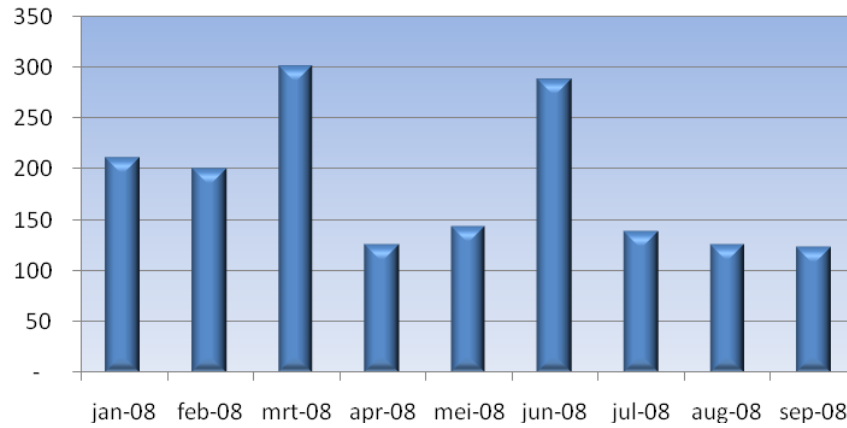


### Cancellation rate



Total period On-Time rate:	76.7 %
Total period Delay rate:	22.0 %
Total period Cancellation rate:	1.3 %

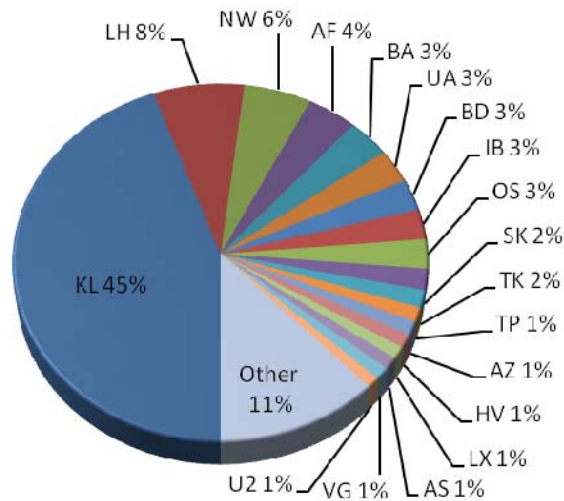
### Total delay (hours)



Total period Delay:	1.660 hours	(based on 1 passenger / flight)
WDE (working day equivalent):	207.5 days	

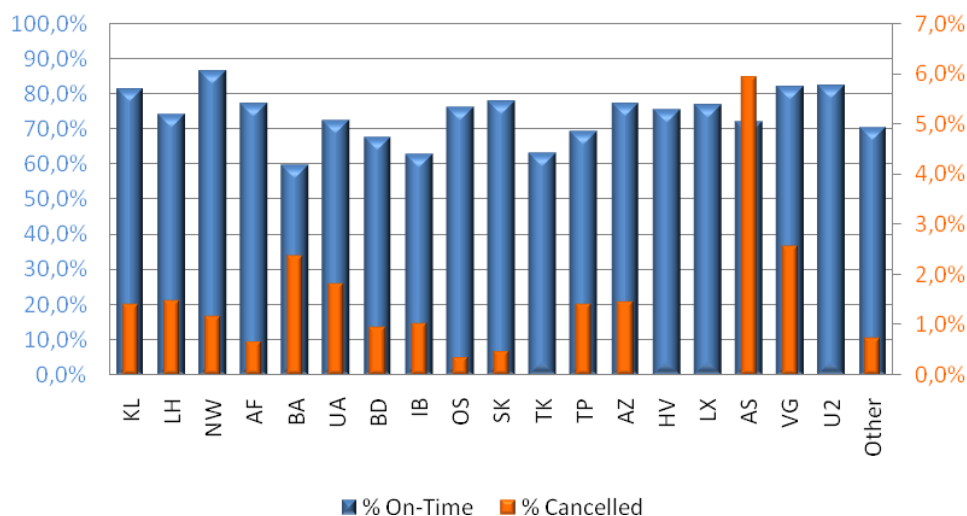
### AIRLINE STATISTICS

#### Flights



Number of airlines (90%):	18

## On time / Cancellations

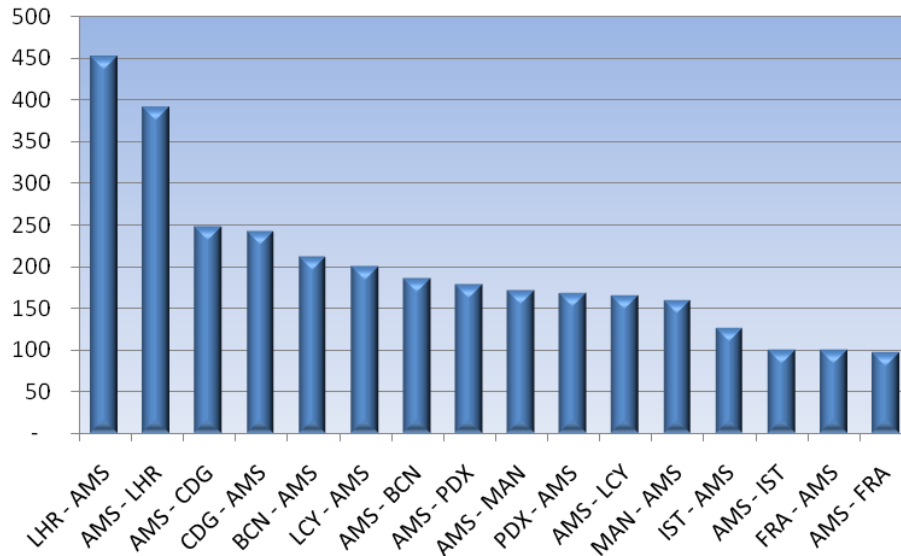


On-time performance	
Best airline (listed above):	Northwest, NW (86.8 %)
Worst airline (listed above):	British Airways, BA (59.6 %)
Overall average:	All airlines (76.7 %)

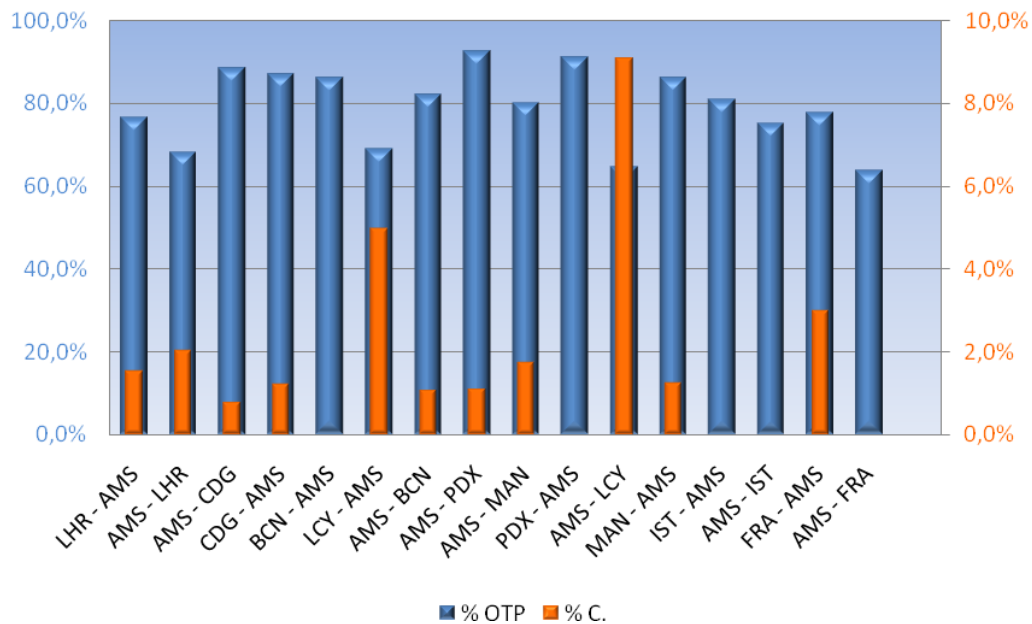
Cancellation rate	
Best airline (listed above):	Easyjet, U2 (0.0 %)
	Transavia (0.0 %)
	Turkish Airlines (0.0 %)
	Swiss, LX (0.0 %)
Worst airline (listed above):	Alaska Airlines, AS
Overall average:	All airlines (1.3 %)

**ROUTE STATISTICS**

**Flights on routes (top 30%)**



**On time / Cancellations**



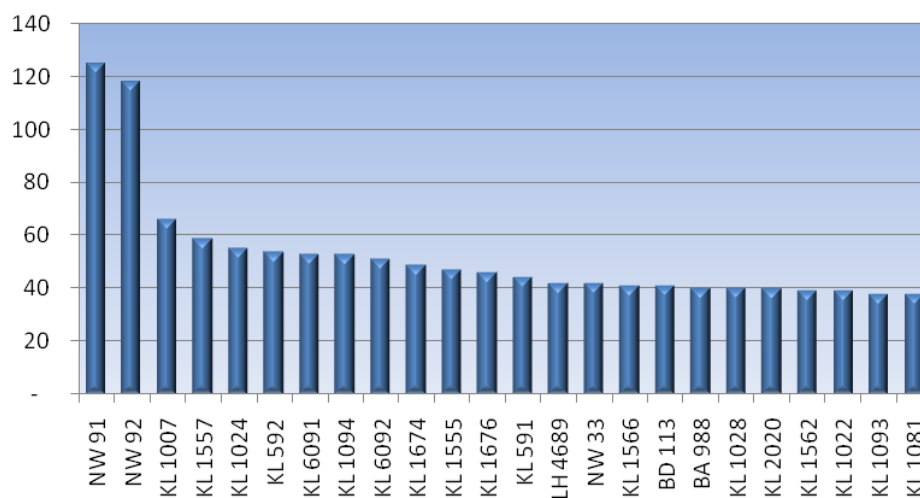
On-time performance	
Best route (listed above):	AMS – PDX (97.2 %)
Worst route (listed above):	AMS – FRA (63.9 %)
Overall average:	All routes (76.7 %)

Cancellation rate	
Best route (listed above):	BCN – AMS (0.0 %)
	PDX – AMS (0.0 %)
	IST – AMS (0.0 %)
	AMS – IST (0.0 %)
	AMS - FRA (0.0%)
Worst route (listed above):	AMS – LCY (9.1 %)
Overall average:	All routes (1.3 %)

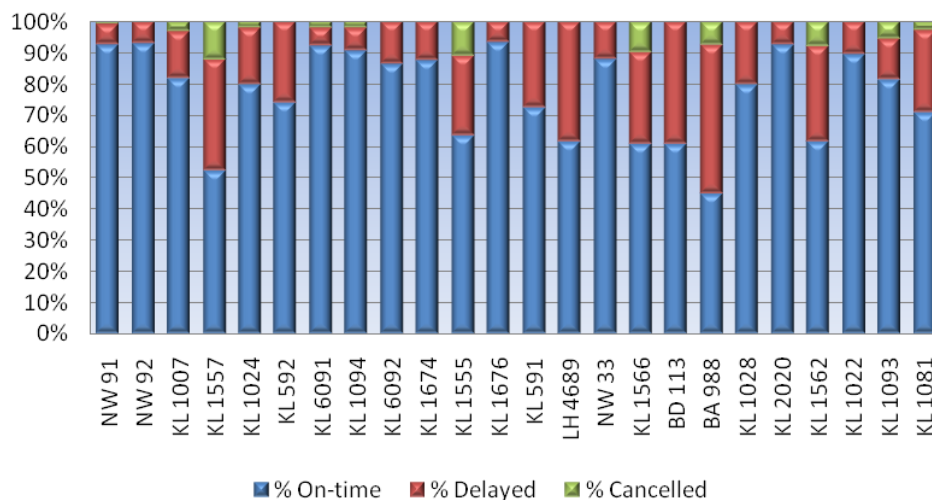
## FLIGHT NUMBER STATISTICS

---

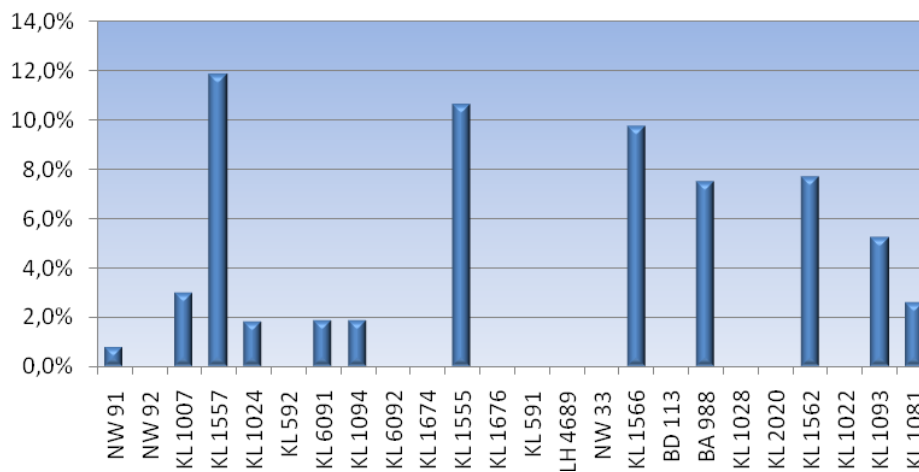
### Flight numbers (top 12%)



## On time / cancellation performance



## Cancellation rate



On-time performance		
Best flight number (listed above):	KL 1676	BCN – AMS (93.5 %)
Worst flight number (listed above):	BA 988	LHR – TXL (45.0 %)
Overall average:	All flights (76.7 %)	

Cancellation rate		
Best flight number (listed above):		
Worst flight number (listed above):	KL 1557	AMS – LCY (11.9 %)
Overall average:	All flight numbers (1.3 %)	

## DETAILS MONTH STATISTICS

Month	Flights	Ontime	% OTP	Delayed	% D	Avg	Min	Max	Total	Canc.	% C
jan-08	1,097	799	72.8%	278	25.3%	0:45	0:15	9:34	210:58	20	1.8%
feb-08	1,303	986	75.7%	296	22.7%	0:40	0:15	5:54	200:34	21	1.6%
mrt-08	1,314	932	70.9%	349	26.6%	0:51	0:15	4:42	301:08	33	2.5%
apr-08	944	733	77.6%	204	21.6%	0:37	0:15	4:38	125:55	7	0.7%
mei-08	967	736	76.1%	227	23.5%	0:38	0:15	5:36	143:55	4	0.4%
jun-08	1,920	1,472	76.7%	437	22.8%	0:39	0:15	7:25	288:46	11	0.6%
jul-08	1,030	820	79.6%	201	19.5%	0:41	0:15	5:18	139:36	9	0.9%
aug-08	1,040	844	81.2%	183	17.6%	0:41	0:15	6:53	126:01	13	1.3%
sep-08	1,101	902	81.9%	180	16.3%	0:41	0:15	6:04	123:07	19	1.7%
<b>Totals</b>	<b>10,716</b>	<b>8,224</b>	<b>76.7%</b>	<b>2,355</b>	<b>22.0%</b>	<b>0:42</b>	<b>0:15</b>	<b>9:34</b>	<b>1660:00</b>	<b>137</b>	<b>1.3%</b>

## DETAILS CARRIER STATISTICS

Carrier	Flights	Ontime	% OTP	Delay	% D	Avg	Min	Max	Total	Canc.	% C
KLM, KL	4,814	3,914	81.3%	832	17.3%	0:40	0:15	6:15	568:18	68	1.4%
Lufthansa, LH	804	598	74.4%	194	24.1%	0:37	0:15	3:40	122:38	12	1.5%
Northwest Airlines, NW	597	518	86.8%	72	12.1%	0:43	0:15	3:40	51:36	7	1.2%
Air France, AF	444	343	77.3%	98	22.1%	0:37	0:15	3:11	61:56	3	0.7%
British Airways, BA	379	226	59.6%	144	38.0%	0:53	0:15	9:34	129:00	9	2.4%
United Airlines, UA	329	239	72.6%	84	25.5%	0:53	0:15	4:46	74:19	6	1.8%
bmi, BD	311	210	67.5%	98	31.5%	0:40	0:15	2:40	66:52	3	1.0%
Iberia, IB	293	184	62.8%	106	36.2%	0:38	0:15	2:42	68:20	3	1.0%
Austrian, OS	287	219	76.3%	67	23.3%	0:39	0:15	3:32	44:00	1	0.3%
SAS, SK	209	163	78.0%	45	21.5%	0:31	0:15	2:13	23:34	1	0.5%
Turkish Airlines, TK	168	106	63.1%	62	36.9%	0:32	0:15	2:00	33:48	-	0.0%
TAP-Air Portugal, TP	140	97	69.3%	41	29.3%	0:40	0:15	3:20	27:47	2	1.4%
Alitalia, AZ	136	105	77.2%	29	21.3%	0:40	0:15	2:22	19:29	2	1.5%
Transavia Airlines, HV	131	99	75.6%	32	24.4%	0:40	0:16	3:38	21:40	-	0.0%
Alaska Airlines, AS	118	85	72.0%	26	22.0%	0:40	0:15	2:19	17:42	7	5.9%
SWISS, LX	118	91	77.1%	27	22.9%	0:28	0:15	1:47	12:56	-	0.0%
VLM Airlines, VG	117	96	82.1%	18	15.4%	0:39	0:15	1:35	11:49	3	2.6%
EasyJet, U2	102	84	82.4%	18	17.6%	1:04	0:19	5:18	19:20	-	0.0%
Singapore Airlines, SQ	88	73	83.0%	15	17.0%	0:41	0:15	3:20	10:23	-	0.0%
Delta Air Lines, DL	86	55	64.0%	30	34.9%	0:57	0:15	6:53	28:43	1	1.2%
Air Berlin, AB	71	43	60.6%	28	39.4%	0:45	0:15	3:30	21:15	-	0.0%
CSA, OK	71	51	71.8%	20	28.2%	0:30	0:15	1:40	10:04	-	0.0%
Brussels Airlines, SN	58	46	79.3%	12	20.7%	0:41	0:18	1:20	8:17	-	0.0%
LOT - Polish Airlines, LO	54	44	81.5%	10	18.5%	0:42	0:15	3:43	7:02	-	0.0%
Aer Lingus, EI	49	33	67.3%	16	32.7%	0:56	0:15	4:06	15:00	-	0.0%
Continental Airlines, CO	47	28	59.6%	18	38.3%	0:37	0:15	1:30	11:11	1	2.1%
Aeroflot, SU	46	31	67.4%	15	32.6%	1:14	0:15	8:58	18:39	-	0.0%
American Airlines, AA	42	35	83.3%	7	16.7%	1:05	0:19	2:46	7:39	-	0.0%
Olympic Airlines, OA	41	23	56.1%	16	39.0%	1:20	0:15	7:25	21:25	2	4.9%
Spanair, JK	35	25	71.4%	9	25.7%	1:04	0:15	3:07	9:37	1	2.9%
Cathay Pacific Airways, CX	33	27	81.8%	6	18.2%	0:31	0:24	0:50	3:10	-	0.0%
bmibaby, WW	31	25	80.6%	3	9.7%	0:47	0:25	1:09	2:21	3	9.7%

Carrier	Flights	Ontime	% OTP	Delay	% D	Avg	Min	Max	Total	Canc.	% C
KLM, KL	4,814	3,914	81.3%	832	17.3%	0:40	0:15	6:15	568:18	68	1.4%
Lufthansa, LH	804	598	74.4%	194	24.1%	0:37	0:15	3:40	122:38	12	1.5%
Northwest Airlines, NW	597	518	86.8%	72	12.1%	0:43	0:15	3:40	51:36	7	1.2%
Air France, AF	444	343	77.3%	98	22.1%	0:37	0:15	3:11	61:56	3	0.7%
British Airways, BA	379	226	59.6%	144	38.0%	0:53	0:15	9:34	129:00	9	2.4%
United Airlines, UA	329	239	72.6%	84	25.5%	0:53	0:15	4:46	74:19	6	1.8%
bmi, BD	311	210	67.5%	98	31.5%	0:40	0:15	2:40	66:52	3	1.0%
Iberia, IB	293	184	62.8%	106	36.2%	0:38	0:15	2:42	68:20	3	1.0%
Austrian, OS	287	219	76.3%	67	23.3%	0:39	0:15	3:32	44:00	1	0.3%
SAS, SK	209	163	78.0%	45	21.5%	0:31	0:15	2:13	23:34	1	0.5%
Turkish Airlines, TK	168	106	63.1%	62	36.9%	0:32	0:15	2:00	33:48	-	0.0%
TAP-Air Portugal, TP	140	97	69.3%	41	29.3%	0:40	0:15	3:20	27:47	2	1.4%
Alitalia, AZ	136	105	77.2%	29	21.3%	0:40	0:15	2:22	19:29	2	1.5%
Transavia Airlines, HV	131	99	75.6%	32	24.4%	0:40	0:16	3:38	21:40	-	0.0%
Alaska Airlines, AS	118	85	72.0%	26	22.0%	0:40	0:15	2:19	17:42	7	5.9%
SWISS, LX	118	91	77.1%	27	22.9%	0:28	0:15	1:47	12:56	-	0.0%
VLM Airlines, VG	117	96	82.1%	18	15.4%	0:39	0:15	1:35	11:49	3	2.6%
EasyJet, U2	102	84	82.4%	18	17.6%	1:04	0:19	5:18	19:20	-	0.0%
Singapore Airlines, SQ	88	73	83.0%	15	17.0%	0:41	0:15	3:20	10:23	-	0.0%
Delta Air Lines, DL	86	55	64.0%	30	34.9%	0:57	0:15	6:53	28:43	1	1.2%
Air Berlin, AB	71	43	60.6%	28	39.4%	0:45	0:15	3:30	21:15	-	0.0%
CSA, OK	71	51	71.8%	20	28.2%	0:30	0:15	1:40	10:04	-	0.0%
Brussels Airlines, SN	58	46	79.3%	12	20.7%	0:41	0:18	1:20	8:17	-	0.0%
LOT - Polish Airlines, LO	54	44	81.5%	10	18.5%	0:42	0:15	3:43	7:02	-	0.0%
Aer Lingus, EI	49	33	67.3%	16	32.7%	0:56	0:15	4:06	15:00	-	0.0%
Continental Airlines, CO	47	28	59.6%	18	38.3%	0:37	0:15	1:30	11:11	1	2.1%
Aeroflot, SU	46	31	67.4%	15	32.6%	1:14	0:15	8:58	18:39	-	0.0%
American Airlines, AA	42	35	83.3%	7	16.7%	1:05	0:19	2:46	7:39	-	0.0%
Olympic Airlines, OA	41	23	56.1%	16	39.0%	1:20	0:15	7:25	21:25	2	4.9%
Finnair, AY	30	21	70.0%	9	30.0%	0:32	0:15	2:00	4:56	-	0.0%
Royal Air Maroc, AT	30	17	56.7%	13	43.3%	0:32	0:15	1:29	7:08	-	0.0%
Emirates, EK	25	13	52.0%	12	48.0%	0:57	0:20	1:53	11:32	-	0.0%
Ukraine International, PS	20	12	60.0%	8	40.0%	0:56	0:19	3:33	7:33	-	0.0%
Malev-Hungarian Airlines, MA	19	14	73.7%	5	26.3%	0:28	0:17	0:47	2:24	-	0.0%
FlyBE, BE	18	16	88.9%	2	11.1%	0:25	0:21	0:29	0:50	-	0.0%
Icelandair, FI	18	13	72.2%	5	27.8%	0:18	0:15	0:25	1:32	-	0.0%
SkyEurope Airlines, NE	18	12	66.7%	6	33.3%	0:31	0:17	1:05	3:09	-	0.0%
Thai Airways International, TG	18	16	88.9%	2	11.1%	0:23	0:15	0:32	0:47	-	0.0%
Jet2, LS	16	15	93.8%	1	6.3%	0:40	0:40	0:40	0:40	-	0.0%
Meridiana, IG	16	8	50.0%	8	50.0%	0:52	0:17	2:09	6:56	-	0.0%
South African Airways, SA	16	13	81.3%	3	18.8%	0:26	0:15	0:41	1:19	-	0.0%
Air Canada, AC	15	13	86.7%	2	13.3%	1:36	0:27	2:46	3:13	-	0.0%
Jat Airways, JU	13	6	46.2%	7	53.8%	0:53	0:17	3:15	6:11	-	0.0%
Sterling European, NB	13	7	53.8%	6	46.2%	0:34	0:18	0:49	3:29	-	0.0%
Adria Airways, JP	12	8	66.7%	4	33.3%	0:25	0:18	0:33	1:42	-	0.0%
Croatia Airlines, OU	11	5	45.5%	6	54.5%	0:25	0:22	0:36	2:33	-	0.0%
Egyptair, MS	11	6	54.5%	5	45.5%	1:08	0:15	3:01	5:44	-	0.0%
Lithuanian Airlines, TE	9	6	66.7%	3	33.3%	0:24	0:19	0:33	1:12	-	0.0%
Dragonair, KA	8	7	87.5%	1	12.5%	0:52	0:52	0:52	0:52	-	0.0%
Martinair, MP	7	4	57.1%	3	42.9%	0:46	0:16	1:04	2:18	-	0.0%
Virgin Atlantic Airways, VS	7	2	28.6%	5	71.4%	1:01	0:22	2:35	5:09	-	0.0%
El Al, LY	6	5	83.3%	1	16.7%	0:15	0:15	0:15	0:15	-	0.0%
US Airways, US	6	5	83.3%	1	16.7%	1:04	1:04	1:04	1:04	-	0.0%
Vueling Airlines, VY	6	2	33.3%	4	66.7%	0:26	0:21	0:41	1:44	-	0.0%

Carrier	Flights	Ontime	% OTP	Delay	% D	Avg	Min	Max	Total	Canc.	% C
KLM, KL	4,814	3,914	81.3%	832	17.3%	0:40	0:15	6:15	568:18	68	1.4%
Lufthansa, LH	804	598	74.4%	194	24.1%	0:37	0:15	3:40	122:38	12	1.5%
Northwest Airlines, NW	597	518	86.8%	72	12.1%	0:43	0:15	3:40	51:36	7	1.2%
Air France, AF	444	343	77.3%	98	22.1%	0:37	0:15	3:11	61:56	3	0.7%
British Airways, BA	379	226	59.6%	144	38.0%	0:53	0:15	9:34	129:00	9	2.4%
United Airlines, UA	329	239	72.6%	84	25.5%	0:53	0:15	4:46	74:19	6	1.8%
bmi, BD	311	210	67.5%	98	31.5%	0:40	0:15	2:40	66:52	3	1.0%
Iberia, IB	293	184	62.8%	106	36.2%	0:38	0:15	2:42	68:20	3	1.0%
Austrian, OS	287	219	76.3%	67	23.3%	0:39	0:15	3:32	44:00	1	0.3%
SAS, SK	209	163	78.0%	45	21.5%	0:31	0:15	2:13	23:34	1	0.5%
Turkish Airlines, TK	168	106	63.1%	62	36.9%	0:32	0:15	2:00	33:48	-	0.0%
TAP-Air Portugal, TP	140	97	69.3%	41	29.3%	0:40	0:15	3:20	27:47	2	1.4%
Alitalia, AZ	136	105	77.2%	29	21.3%	0:40	0:15	2:22	19:29	2	1.5%
Transavia Airlines, HV	131	99	75.6%	32	24.4%	0:40	0:16	3:38	21:40	-	0.0%
Alaska Airlines, AS	118	85	72.0%	26	22.0%	0:40	0:15	2:19	17:42	7	5.9%
SWISS, LX	118	91	77.1%	27	22.9%	0:28	0:15	1:47	12:56	-	0.0%
VLM Airlines, VG	117	96	82.1%	18	15.4%	0:39	0:15	1:35	11:49	3	2.6%
EasyJet, U2	102	84	82.4%	18	17.6%	1:04	0:19	5:18	19:20	-	0.0%
Singapore Airlines, SQ	88	73	83.0%	15	17.0%	0:41	0:15	3:20	10:23	-	0.0%
Delta Air Lines, DL	86	55	64.0%	30	34.9%	0:57	0:15	6:53	28:43	1	1.2%
Air Berlin, AB	71	43	60.6%	28	39.4%	0:45	0:15	3:30	21:15	-	0.0%
CSA, OK	71	51	71.8%	20	28.2%	0:30	0:15	1:40	10:04	-	0.0%
Brussels Airlines, SN	58	46	79.3%	12	20.7%	0:41	0:18	1:20	8:17	-	0.0%
LOT - Polish Airlines, LO	54	44	81.5%	10	18.5%	0:42	0:15	3:43	7:02	-	0.0%
Aer Lingus, EI	49	33	67.3%	16	32.7%	0:56	0:15	4:06	15:00	-	0.0%
Continental Airlines, CO	47	28	59.6%	18	38.3%	0:37	0:15	1:30	11:11	1	2.1%
Aeroflot, SU	46	31	67.4%	15	32.6%	1:14	0:15	8:58	18:39	-	0.0%
American Airlines, AA	42	35	83.3%	7	16.7%	1:05	0:19	2:46	7:39	-	0.0%
Olympic Airlines, OA	41	23	56.1%	16	39.0%	1:20	0:15	7:25	21:25	2	4.9%
Air One, AP	5	3	60.0%	2	40.0%	0:21	0:15	0:27	0:42	-	0.0%
Cimber Air, QI	5	4	80.0%	1	20.0%	0:25	0:25	0:25	0:25	-	0.0%
Condor Flugdienst, DE	5	3	60.0%	2	40.0%	1:06	0:19	1:54	2:13	-	0.0%
Wideroe, WF	5	3	60.0%	2	40.0%	1:01	0:33	1:29	2:02	-	0.0%
Aegean Airlines, A3	4	4	100.0%	-	0.0%	0:00	0:00	0:00	0:00	-	0.0%
Air China International, CA	4	2	50.0%	1	25.0%	0:21	0:21	0:21	0:21	1	25.0%
Air Malta, KM	4	2	50.0%	2	50.0%	0:26	0:25	0:28	0:53	-	0.0%
Cyprus Airways, CY	4	3	75.0%	1	25.0%	1:05	1:05	1:05	1:05	-	0.0%
Monarch Airlines, ZB	4	3	75.0%	1	25.0%	1:25	1:25	1:25	1:25	-	0.0%
Niki, HG	4	2	50.0%	2	50.0%	1:15	0:15	2:15	2:30	-	0.0%
Air Mauritius, MK	3	-	0.0%	3	100.0%	1:20	0:25	2:55	4:00	-	0.0%
ANA, NH	3	2	66.7%	1	33.3%	0:29	0:29	0:29	0:29	-	0.0%
JAL, JL	3	2	66.7%	1	33.3%	0:21	0:21	0:21	0:21	-	0.0%
Korean Air Lines, KE	3	2	66.7%	1	33.3%	0:22	0:22	0:22	0:22	-	0.0%
Malaysia Airlines, MH	3	2	66.7%	1	33.3%	0:17	0:17	0:17	0:17	-	0.0%
Aer Arann, RE	2	2	100.0%	-	0.0%	0:00	0:00	0:00	0:00	-	0.0%
Air Europa Lineas Aereas, UX	2	1	50.0%	1	50.0%	1:54	1:54	1:54	1:54	-	0.0%
Air India Express, IT	2	-	0.0%	2	100.0%	0:27	0:20	0:35	0:55	-	0.0%
China Airlines, CI	2	1	50.0%	1	50.0%	1:29	1:29	1:29	1:29	-	0.0%
China Eastern Airlines, MU	2	2	100.0%	-	0.0%	0:00	0:00	0:00	0:00	-	0.0%
China Southern Airlines, CZ	2	1	50.0%	1	50.0%	0:39	0:39	0:39	0:39	-	0.0%
Estonian Air, OV	2	1	50.0%	1	50.0%	0:20	0:20	0:20	0:20	-	0.0%
Euromanx, 3W	2	1	50.0%	-	0.0%	0:35	0:19	0:16	1:29	1	50.0%
Gulf Air, GF	2	1	50.0%	1	50.0%	0:20	0:20	0:20	0:20	-	0.0%
Hainan Airlines, HU	2	2	100.0%	-	0.0%	0:00	0:00	0:00	0:00	-	0.0%

Carrier	Flights	Ontime	% OTP	Delay	% D	Avg	Min	Max	Total	Canc.	% C
KLM, KL	4,814	3,914	81.3%	832	17.3%	0:40	0:15	6:15	568:18	68	1.4%
Lufthansa, LH	804	598	74.4%	194	24.1%	0:37	0:15	3:40	122:38	12	1.5%
Northwest Airlines, NW	597	518	86.8%	72	12.1%	0:43	0:15	3:40	51:36	7	1.2%
Air France, AF	444	343	77.3%	98	22.1%	0:37	0:15	3:11	61:56	3	0.7%
British Airways, BA	379	226	59.6%	144	38.0%	0:53	0:15	9:34	129:00	9	2.4%
United Airlines, UA	329	239	72.6%	84	25.5%	0:53	0:15	4:46	74:19	6	1.8%
bmi, BD	311	210	67.5%	98	31.5%	0:40	0:15	2:40	66:52	3	1.0%
Iberia, IB	293	184	62.8%	106	36.2%	0:38	0:15	2:42	68:20	3	1.0%
Austrian, OS	287	219	76.3%	67	23.3%	0:39	0:15	3:32	44:00	1	0.3%
SAS, SK	209	163	78.0%	45	21.5%	0:31	0:15	2:13	23:34	1	0.5%
Turkish Airlines, TK	168	106	63.1%	62	36.9%	0:32	0:15	2:00	33:48	-	0.0%
TAP-Air Portugal, TP	140	97	69.3%	41	29.3%	0:40	0:15	3:20	27:47	2	1.4%
Alitalia, AZ	136	105	77.2%	29	21.3%	0:40	0:15	2:22	19:29	2	1.5%
Transavia Airlines, HV	131	99	75.6%	32	24.4%	0:40	0:16	3:38	21:40	-	0.0%
Alaska Airlines, AS	118	85	72.0%	26	22.0%	0:40	0:15	2:19	17:42	7	5.9%
SWISS, LX	118	91	77.1%	27	22.9%	0:28	0:15	1:47	12:56	-	0.0%
VLM Airlines, VG	117	96	82.1%	18	15.4%	0:39	0:15	1:35	11:49	3	2.6%
EasyJet, U2	102	84	82.4%	18	17.6%	1:04	0:19	5:18	19:20	-	0.0%
Singapore Airlines, SQ	88	73	83.0%	15	17.0%	0:41	0:15	3:20	10:23	-	0.0%
Delta Air Lines, DL	86	55	64.0%	30	34.9%	0:57	0:15	6:53	28:43	1	1.2%
Air Berlin, AB	71	43	60.6%	28	39.4%	0:45	0:15	3:30	21:15	-	0.0%
CSA, OK	71	51	71.8%	20	28.2%	0:30	0:15	1:40	10:04	-	0.0%
Brussels Airlines, SN	58	46	79.3%	12	20.7%	0:41	0:18	1:20	8:17	-	0.0%
LOT - Polish Airlines, LO	54	44	81.5%	10	18.5%	0:42	0:15	3:43	7:02	-	0.0%
Aer Lingus, EI	49	33	67.3%	16	32.7%	0:56	0:15	4:06	15:00	-	0.0%
Continental Airlines, CO	47	28	59.6%	18	38.3%	0:37	0:15	1:30	11:11	1	2.1%
Aeroflot, SU	46	31	67.4%	15	32.6%	1:14	0:15	8:58	18:39	-	0.0%
American Airlines, AA	42	35	83.3%	7	16.7%	1:05	0:19	2:46	7:39	-	0.0%
Olympic Airlines, OA	41	23	56.1%	16	39.0%	1:20	0:15	7:25	21:25	2	4.9%
Kenya Airways, KQ	2	1	50.0%	1	50.0%	0:50	0:50	0:50	0:50	-	0.0%
Mexicana, MX	2	2	100.0%	-	0.0%	0:00	0:00	0:00	0:00	-	0.0%
Smart Wings, QS	2	2	100.0%	-	0.0%	0:00	0:00	0:00	0:00	-	0.0%
Tarom, RO	2	2	100.0%	-	0.0%	0:00	0:00	0:00	0:00	-	0.0%
Aeromexico, AM	1	-	0.0%	1	100.0%	0:20	0:20	0:20	0:20	-	0.0%
Binter Canarias, NT	1	-	0.0%	1	100.0%	0:31	0:31	0:31	0:31	-	0.0%
Blue1, KF	1	1	100.0%	-	0.0%	0:00	0:00	0:00	0:00	-	0.0%
Bulgaria Air, FB	1	-	0.0%	1	100.0%	0:20	0:20	0:20	0:20	-	0.0%
Ethiopian Airlines, ET	1	1	100.0%	-	0.0%	0:00	0:00	0:00	0:00	-	0.0%
Jet Airways (India), 9W	1	-	0.0%	1	100.0%	0:20	0:20	0:20	0:20	-	0.0%
Malmo Aviation, TF	1	1	100.0%	-	0.0%	0:00	0:00	0:00	0:00	-	0.0%
Pulkovo Aviation, FV	1	1	100.0%	-	0.0%	0:00	0:00	0:00	0:00	-	0.0%
Qantas Airways, QF	1	1	100.0%	-	0.0%	0:00	0:00	0:00	0:00	-	0.0%
Royal Jordanian, RJ	1	-	0.0%	1	100.0%	0:30	0:30	0:30	0:30	-	0.0%
Ryanair, FR	1	1	100.0%	-	0.0%	0:00	0:00	0:00	0:00	-	0.0%
Shandong Airlines, SC	1	-	0.0%	1	100.0%	0:25	0:25	0:25	0:25	-	0.0%
Varig, RG	1	1	100.0%	-	0.0%	0:00	0:00	0:00	0:00	-	0.0%
Vietnam Airlines, VN	1	1	100.0%	-	0.0%	0:00	0:00	0:00	0:00	-	0.0%

**DETAILS ROUTE STATISTICS**

---

*More information: excel sheet*

**DETAILS FLIGHT NUMBER STATISTICS**

---

*More information: excel sheet*